



## PV Panel Mounting Structure

- Easy to Install
- Light Weight
- Rust Free
- Long Lifetime
- Easy to Maintenance
- Anodization on Aluminium
- Suitable to Fit with Corrugated Sheet
- High Protection of Water Leakage

Xiamen Photone Tech. Co., Ltd.

Corporate office:  
Rm302, No.173, Dongpu Yili,  
Siming District, Xiamen, China  
361007

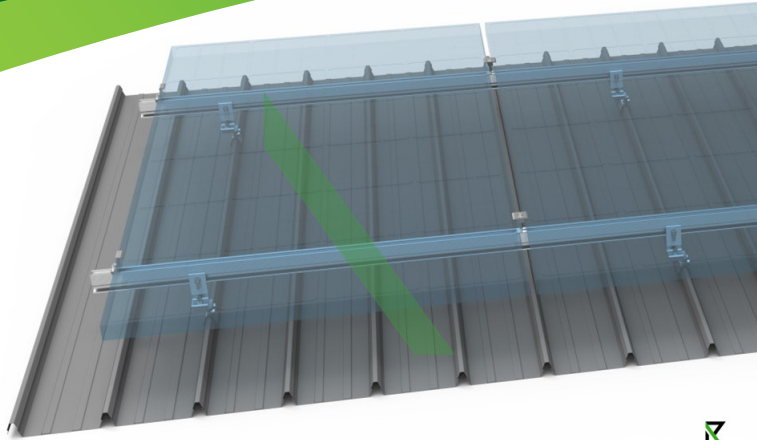


Tel: 86-592-5650385

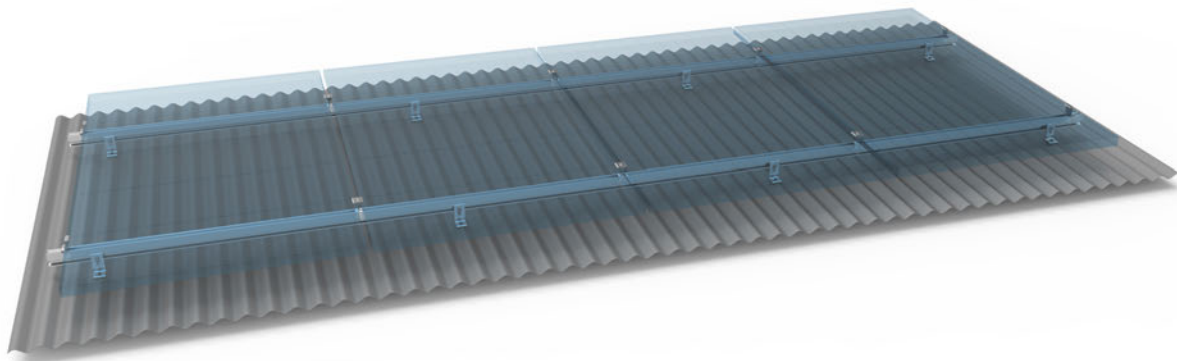


info@solaracks.com  
<https://www.solaracks.com>



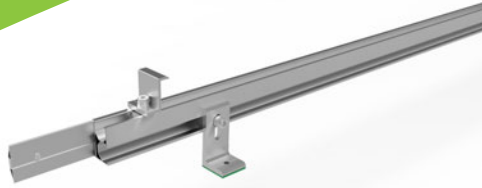


The L feet metal roof mounting system is most universal mounting structure, suitable for roofing with corrugated sheet, trapezoidal metal sheet, asbestos roof. L Feet, hanger bolt are available for foot options, making installation faster, competitive and reliable. Systems are fully compliant with the Australian and other international standards on wind & snow load, making it suitable for a wide variety of climatic zones.



- Color: Natural , Powder Coated
- Install Site: Pitched Roof
- Module Orientation: Landscape , Portrait
- Wind Speed: Up To 88m/S(316.8kmh/196.9mph)
- Tilt Angle: Fixed flush mount
- Material: Anodized Aluminum 6005 T5, SS 304
- Earthing clip, Rail Joiner and other accessories





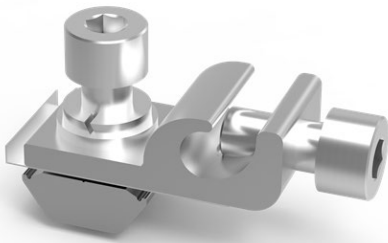
Structure



L feet type 1



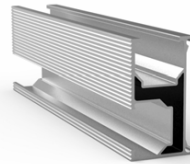
L feet type 2



Earthing clip



Screw



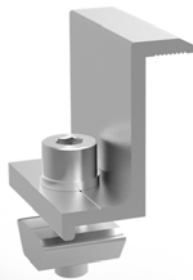
Rail type 1



Rail type 2



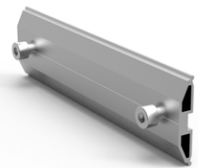
Panel clip



End Clamp



Mid clamp



Rail joiner

